

EZTouchPLC™ 6" Mono Slim Bezel Panels

6" Monochrome EZTouchPLC - Slim Bezel (5.7" STN)

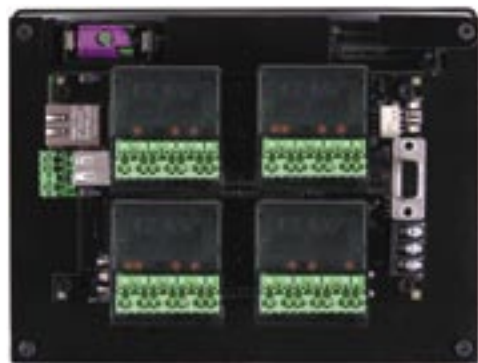
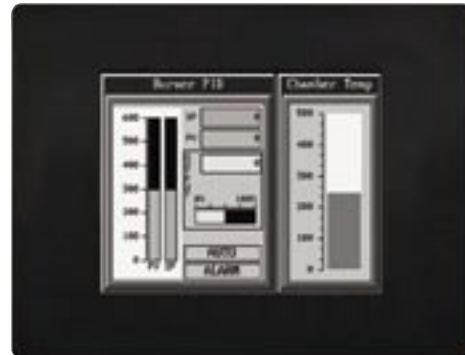
EZTouchPLC's 6" slim bezel panels have a 5.7" diagonal touch screen with 320x240 pixel resolution. These panels have an STN LCD (liquid crystal display) with 16 shades of gray and are available with 32 I/O (max) PLC base. I/O modules are not included with EZTouchPLC and can be purchased separately. Please refer to EZI/O section (9) which lists all the available modules along with part number and pricing. All these panels have a very low slim profile along with a smaller footprint on enclosures.

6" Mono models feature:

- 5.7" diagonal mono STN LCD 16 shades
- NEMA 1, FDA compliant material
- 320x240 pixel resolution
- 25,000 hour expected bulb half-life
- 48 touch cells (8x6)
- 1/4" gasket and four DIN mounting clips for NEMA 1
- 3.896" (98.95mm) installed depth
- 192 touch cells
- 512K Expandable RAM for HMI

32 I/O EZPLC BASE

- Total Program/Data Memory 64KB
- 3ms Scantime for 1K Instruction
- RS232 & RS422/485 Ports
- ASCII In/Out
- Built-in Calendar/Clock



Model Number	Interface
EZP-S6M-FS-PLC	6" STN Mono, 32 I/O EZPLC base, DC Power
EZP-S6M-FS-PLC-E	6" STN Mono, 32 I/O EZPLC base w/Ethernet, DC Power
EZP-S6M-FS-PLC-D	6" STN Mono, 32 I/O EZPLC base w/DeviceNet, DC Power
EZP-S6M-FS-PLC-P	6" STN Mono, 32 I/O EZPLC base w/Profibus, DC Power

